

MIX[®] 2.0 - UPDATE PROCEDURE

1. INSTALLING THE DRIVERS

- Uncompress the MIX Update Software (preferably on your desktop).
- Open the folder.
- Launch **lct_installer_1.exe** to install the drivers.

Name	Status	Date modified
DFUSec.exe	✓	18/12/2017 17:45
DFUUTIL.ini	✓	20/08/2019 15:25
iram_dfu_util_any.bin.hdr	✓	18/12/2017 17:45
lct_installer_1.exe	✓	09/03/2018 13:54
Mix-Update-Procedure-01.pptx	✓	20/08/2019 16:21

- Follow the procedure. Untick all boxes when the installation is finished. The software should close.



Completing the LPC-Link 2 Configuration Tool Setup Wizard

Click the "Finish" button to exit the Setup Wizard.

untick

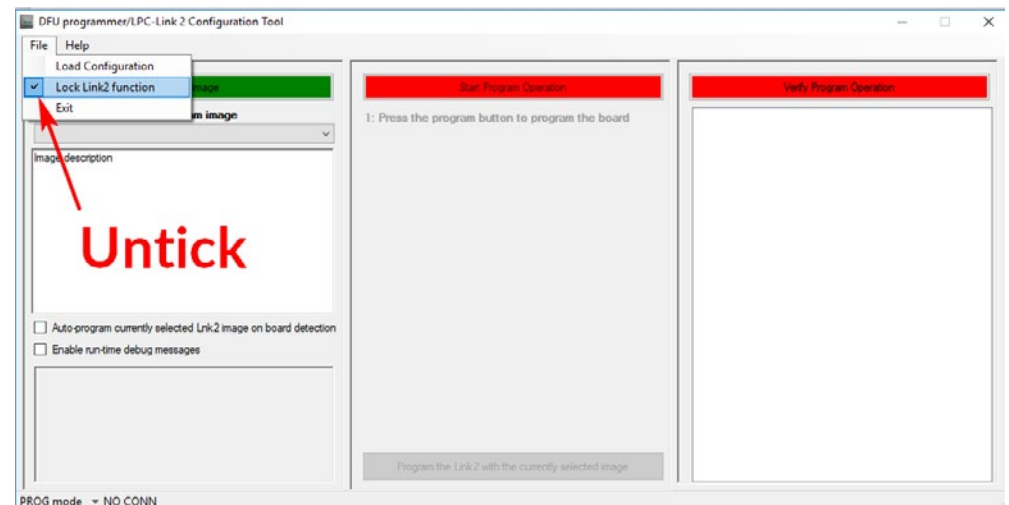
- ☐ View readme file
- ☐ Launch LPC-Link 2 Configuration Tool

2. LAUNCHING AND CONFIGURING

- Go back to the folder and launch **DFUSec.exe**:

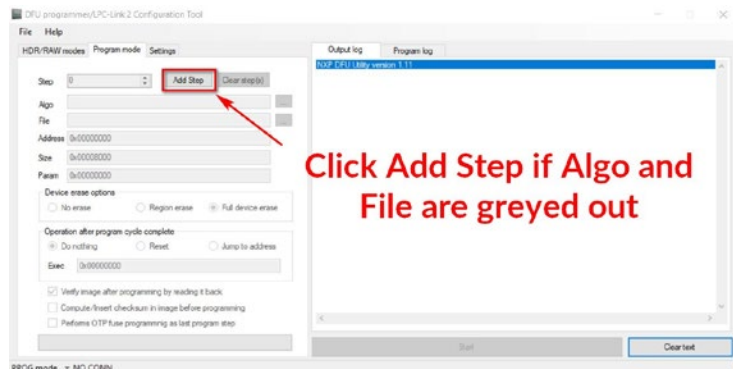
DFUSec.exe	✓	18/12/2017 17:45
DFUUTIL.ini	✓	20/08/2019 16:48
iram_dfu_util_any.bin.hdr	✓	18/12/2017 17:45
lct_installer_1.exe	✓	09/03/2018 13:54
Mix-Update-Procedure-01.pptx	✓	20/08/2019 16:47

- Go to File and untick **Lock LINK2 function**:

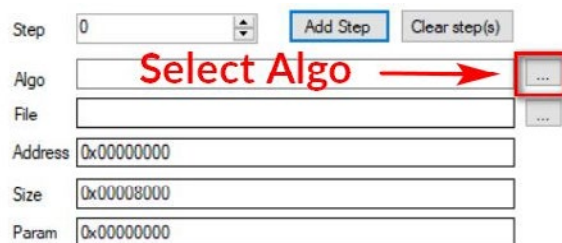


2. LAUNCHING AND CONFIGURING (CONTINUED)

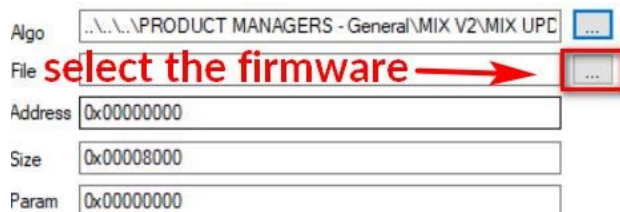
- You will arrive at the windows below. If Algo and File are greyed out, please add a step by clicking **Add Step**. If they are not greyed out, go to the next page of this procedure.



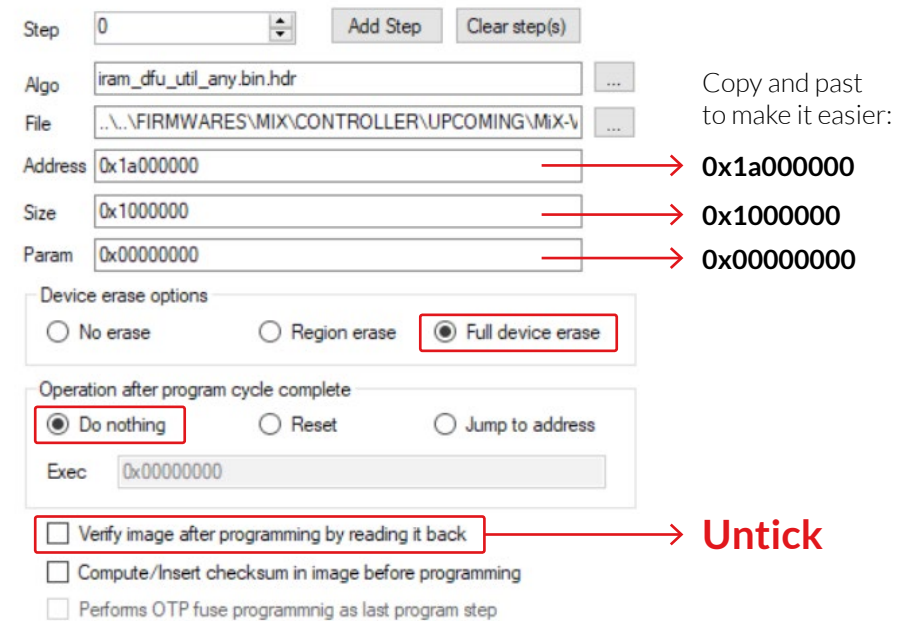
- Select the programming algorithm in the MIX Update Software folder, called **iram_dfu_util_any.bin.hdr**



- Select the latest firmware you have downloaded from the website:



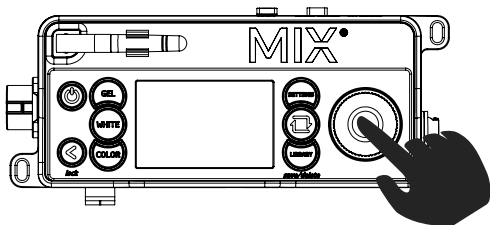
- Fill in the configuration options exactly like the picture below:



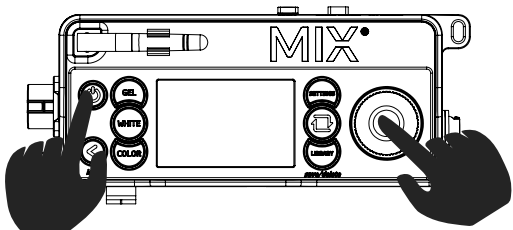
MIX - UPDATE PROCEDURE

3. UPDATING

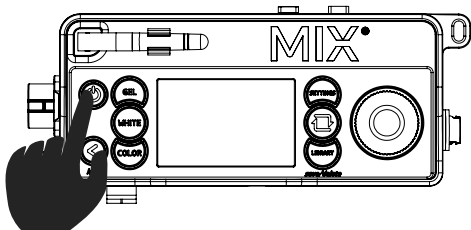
- Connect the MIX controller to a power supply. If the controller turns ON, turn it back OFF.
- Connect the MIX controller to this PC using a USB to Micro USB cable.
- Press the Red dimmer button and keep it pressed:



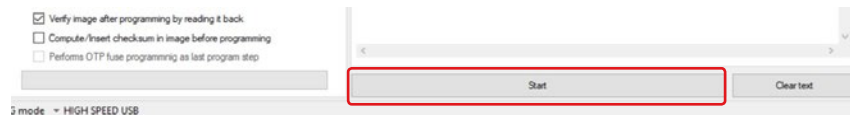
- Turn on the MIX controller while keeping the dimmer button pressed:



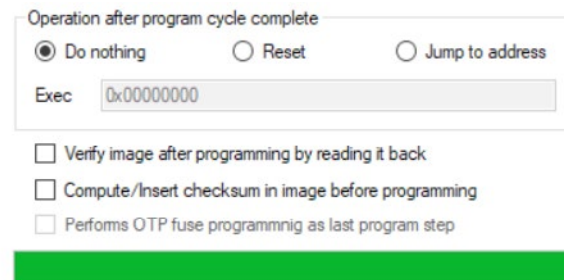
- Do not release the ON/OFF button!
- Release the dimmer button but keep the on/off button pressed.



- **Start** button will turn from grey to normal if the MIX is started properly in update mode.
- **Click the Start button in DFUsec to update the MIX:**



- Make sure the update was successful. The green bar should be full.



- Disconnect from the power supply and reconnect. Turn the controller back ON.
- To verify the proper firmware is in the MIX controller, go to SETTINGS/INFORMATION and verify the firmware version.

UPDATE IS FINISHED, ENJOY!