



User Manual

www.doughty-engineering.co.uk

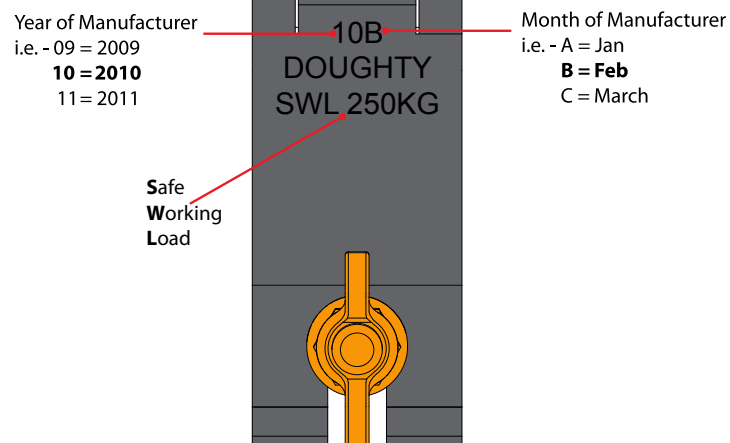
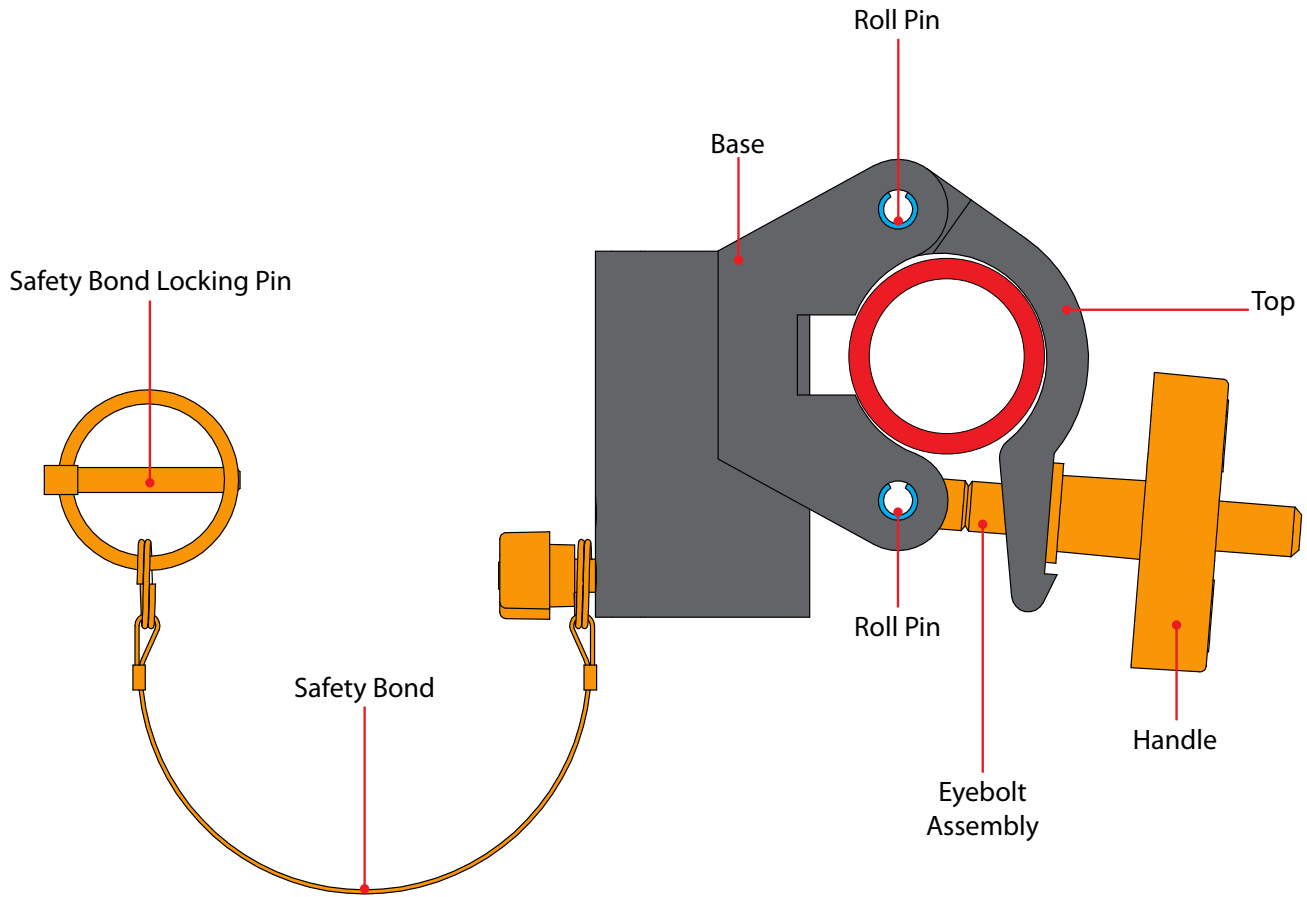
T57223/24 TV Doughty Clamp



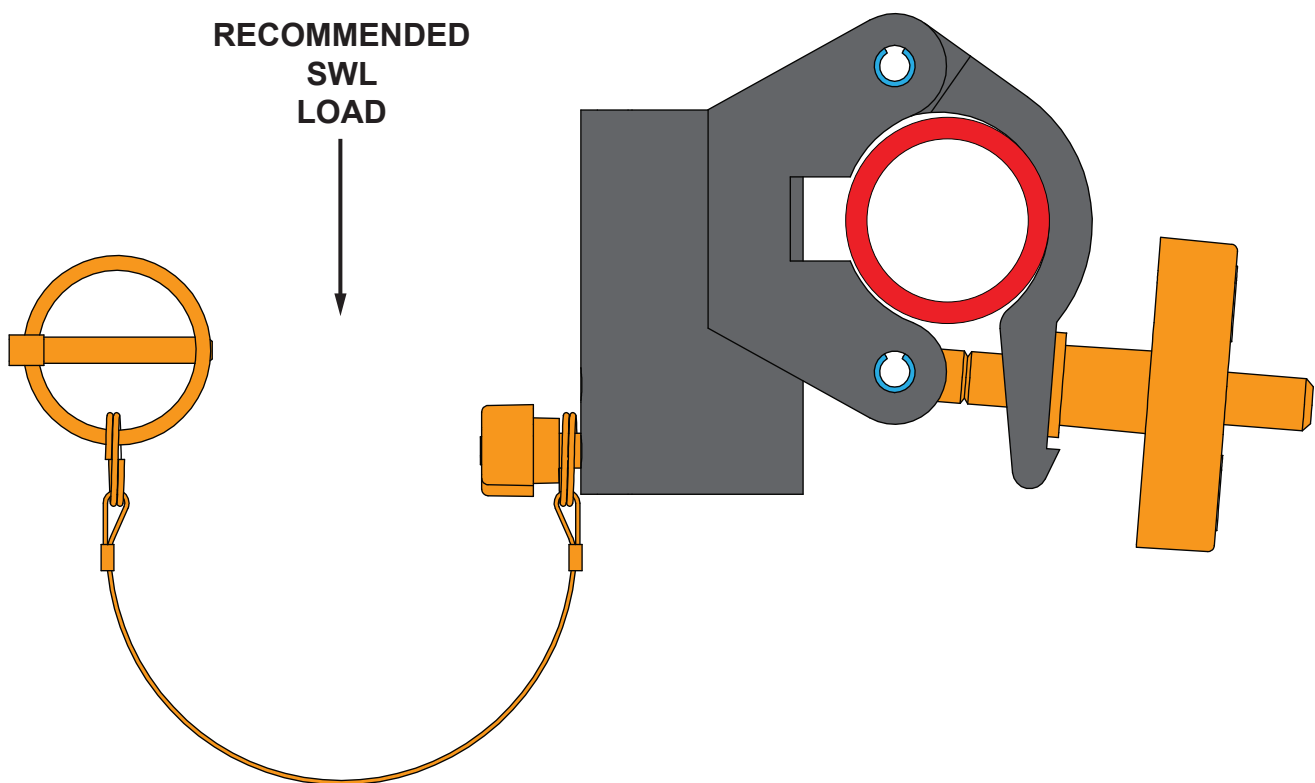
Version 01/11





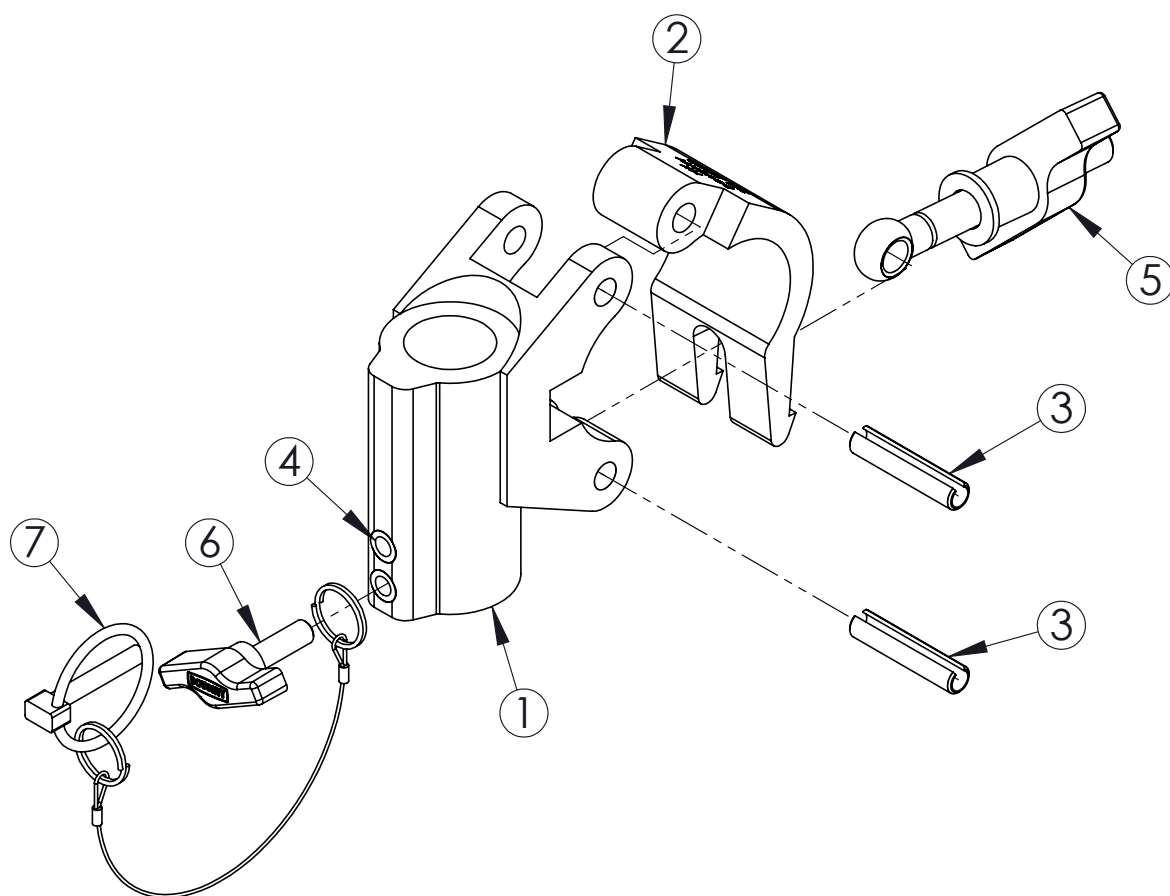
www.doughty-engineering.co.uk



1. Never exceed the Safe Working Load (SWL) shown on the clamp.
2. Only use the clamp within the designed tube parameters (48-51mm)
3. All clamps should be visually inspected before use. In the event of any damage the clamp should be taken out of service and returned to an 'Approved Doughty Service Agent' for inspection. (see our dealer locator on our web site for a comprehensive list of Authorised Service Agents)
4. When used in conjunction with other accessories, care must be taken to ensure that the minimum SWL of any component is not exceeded.
5. Doughty Engineering Ltd does not recommend using any clamps which do not fully encompass the tube for overhanging. All open clamps including hookclamps should be used in a vertical orientation only.



 DOUGHTY ENGINEERING LTD	DATA SHEET	TITLE: TV DOUGHTY CLAMP	PART NOS: T57223 - SILVER T57224 - BLACK	MATERIAL : ALUMINIUM	WEIGHT: 0.93 KG	SWL: 250 KG	FINISH: T57223 - POLISHED T57224 - POWDER PAINTED	NOTES:	STRICTLY FOR REFERENCE PURPOSES ONLY	 THIRD ANGLE PROJECTION
<div data-bbox="220 600 453 913"> </div> <div data-bbox="746 703 1257 927"> </div> <div data-bbox="309 1173 517 1868"> </div> <div data-bbox="740 1173 1257 1868"> </div>										



DOUGHTY PRODUCTS MUST ONLY BE SERVICED / REPAIRED BY
AN AUTHORISED SERVICE AGENT.
SPARE PARTS ARE ONLY AVAILABLE TO THESE AGENTS

ITEM NO.	PART NUMBER	DESCRIPTION	QTY.
1	TH736	TV DOUGHTY CLAMP BASE ASSY	1
2	TH157	MACHINED DOUGHTY CLAMP TOP	1
3	F790	0.375" X 1.75" STAINLESS STEEL ROLL PIN	2
4	F630	M8 TAPPEX INSERT	2
5	T78052	M12 X 104 EYEBOLT ASSEMBLY	1
6	S0118	M8 X 25 DOUGHTY KNOB MALE SILVER S/HD	1
7	T28380	1.5MM X 170 BOND	1

T57223 - TV DOUGHTY CLAMP



DRAWN	AW
DATE	10/01/2011
Rev	1

NOT TO SCALE



Doughty Engineering Limited

CROW ARCH LANE, RINGWOOD, HANTS, BH24 1NZ. ENGLAND

Telephone: +44 (0) 1425 478961 Fax: +44 (0) 1425 474481

www.doughty-engineering.co.uk

email:sales@doughty-engineering.co.uk

EC DECLARATION OF CONFORMITY

Doughty Engineering Limited hereby certify that the equipment stated below has been designed to comply with all relevant sections of the specifications referenced below and complies with all the applicable Essential Requirements of the EC Directives and amendments and the National Laws and Regulations adopting these Directives.

Description: TV Doughty Clamp

Model/s: Part No. T57223 / T57224

SWL: 250Kg **Factor:** 5:1

are in conformity with the provision of the following EC Directives:

MACHINERY DIRECTIVE 98/37/EC

Harmonised Standards applied:

EN 292-1-2:1991

BS EN ISO 9001:1994

National Technical Standards & Specifications applied:

BS 7905-1:2001

Signed:  Date:23-04-08

Name: Nigel Curtis Position: Technical Director

Being the responsible person appointed by the manufacturer.



DEQ 083 Rev 4

Company Registration No. London 972614
Registered Office: Crow Arch Lane, Ringwood, Hants, BH24 1NZ
Directors: M.B.Lister. J.C.G. Chiverton. N.D. Curtis. S.C. Wright





Doughty Engineering Ltd

Crow Arch Lane

Ringwood, Hampshire, BH24 1NZ

Tel: +44 (0) 1425 478961 Fax: +44 (0) 1425 474481

email: sales@doughty-engineering.co.uk

Web: www.doughty-engineering.co.uk

Note: Whilst every effort has been made to ensure that the information contained within this manual is correct, Doughty Engineering does not accept any liability for errors or omissions. Specifications and technical data are intended for guidance purposes only and may vary.